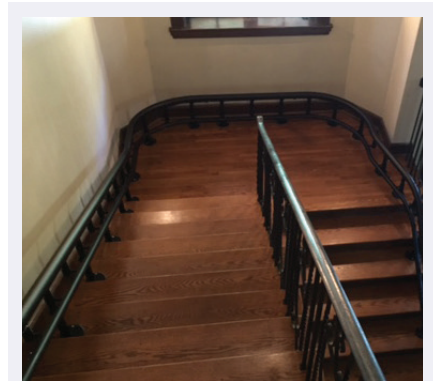


HELIX CURVED STAIRLIFT

AS UNIQUE AS YOU AND YOUR HOME



ONE OF A KIND

A Helix Curved Stairlift is one of a kind. Harmar designs are crafted to fit your needs, staircase, and decor.

The Helix is built to last. Every staircase that is fitted with a Helix is measured with a calibrated camera kit for digital accuracy. Constructed with highly durable steel, custom precision-bent rails, and finished by experienced craftsmen, this true curved rail is highly engineered to give you an extraordinarily smooth ride.

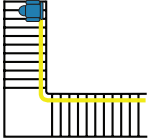
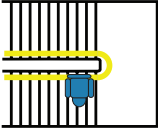

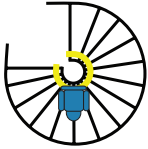

Your unique path to independence will allow you to enjoy time with your family and your home on every level giving you independence, freedom, and the quality of life you deserve.

TIGHTER CURVES

The Helix's narrow profile mounts closer to the wall, hugging the stairway with tighter bends and radius curves.

This means more room for you and others, and a comfortable smooth ride.

HELIX CURVED STAIRLIFT MODELS

| | |
|---|---|
|  | CSL590-18: - 0°-90° first turn - Up to 18' rail <hr/> CSL590-24: - 0°-90° first turn - Up to 24' rail |
|  | CSL580-18: - 91°-180° first turn - Up to 18' rail <hr/> CSL580-24: - 91°-180° first turn - Up to 24' rail |
|  | CSL570: - Sweep - Up to 24' rail |
|  | CSL560: - Spiral - Up to 24' rail |
|  | CSL510: - Straight with overrun - Up to 16' rail <hr/> CSL511: - Straight with intermediate landing - Up to 16' rail |

Additional operations include 90° turns, 180° turns, parks, intermediate landings, drop nose, and top overruns.



My Helix was made just for me. Most importantly, it was made for my independence, my confidence, my quality of life. It provides a solid and stable ride that has given me full access to my home.

HELIX PRODUCT SPECIFICATIONS

| | | | |
|------------------------|--|-------------------------|--|
| WEIGHT CAPACITY | 350 lb | SPEED | 20 FPM |
| TRACK LENGTH | - 16', 18' and 24' standard depending on configuration - Extra rail up to 164' | INCLINE LIMIT(S) | up to 60° |
| SEAT SIZE | 19" x 15" | FOOTREST SIZE | 11" x 12" |
| FOLDED WIDTH | 16" from wall | DRIVE | Steel rack and pinion |
| CERTIFIED | - ETL listed - CSA B44.1/ASME A17.5 - Safety standard ASME A18.1 - Rated commercial & residential | WARRANTY | - Limited lifetime: Drive system, structure - 2-year parts - 1-year battery |
| SAFETY FEATURES | - Direction limit switches - Final limit switch - Footrest obstruction sensors - Seat swivel interlock - Constant pressure controls - Retractable seat belt - Chassis obstruction sensors - Overspeed brake | OPTIONS | - Emergency stop - Key switch - Additional call/send - Additional charging station - Black or beige rail, chassis, upholstery - Outdoor package |